



Tips and Techniques Experimenting with Decorating Wax

4

Decorating Objects

- metal can with simple patterns
- shaved wood box with imprinted pattern
- lacquered box with strips of decorating Wax
- tea jar with Decorating and Modeling Wax

Decorating objects from daily life is perhaps not quite as well known as decorating candles with sheet wax. Since STOCKMAR Decorating Wax adheres well to almost all surfaces, it can be used to decorate almost anything; it not only gives things a new look but also lets you use them for a different purpose. So in this way you can create many beautiful gifts and objects. Here's a short list of just some of the many things you can creatively design with Decorating Wax: cans, jars, wooden boxes, matchboxes, cosmetic containers, bottles, paperweights, key racks, flower pots, cookie jars, wooden crates, mirror frames, etc.

Since you won't necessarily have all the objects used here at your disposal, the instructions that follow should merely serve as an example (the numbers in brackets refer to the examples shown).



Tips and Techniques Experimenting with Decorating Wax

Blechdose mit einfachen Mustern



Metal can with simple patterns

You need:

- 1 can with a round lid (9.5 cm ø, 4 cm high)
- STOCKMAR Decorating Wax in the colours crimson (200 x 100 mm sheet), orange, golden and green (200 x 40 mm sheets)
- kitchen knife, manicure scissors, ruler
- hairspray or clear varnish

1- Press lid onto the red wax sheet, trace around it with knife, cutting it out at the same time. Place sheet wax on the lid and press on.



2- For the rim of the lid, use ruler and knife to cut out strip in the respective width and wrap around the rim as described on page 3 of part 2 (Working Materials). The strip can also be pieced together from several smaller segments.

3- Using the ruler and knife, cut a 1.5 mm long piece from the green wax sheet and use it to make little leaves. Cut out the leaves directly with the knife (or a scissors); doing this with



stencils would be too difficult. Etch veins into leaves with knife and overlap the leaves when applying to the rim of the lid (dia. 2).

4- For the "blossoms" you'll need small circles (about 2 cm ø). Find yourself a suitably shaped cookie cutter, e.g. the opening of a medicine bottle. Press the cutter onto the golden wax sheet and either cut out directly or trace around and cut out with the knife. Distribute the "blossoms" equally on the lid (dia. 1). For the center of the blossoms, knead little pieces of orange sheet wax into tiny balls and press flat with finger.

5- Repeat the blossom-leaf motif on the outside of the can (dia. 3). Fixate with hairspray or clear varnish.



Tips and Techniques Experimenting with Decorating Wax

Shaved Wood Box with imprinted patterns

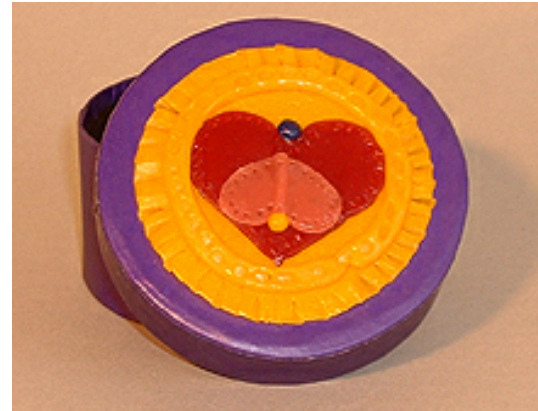
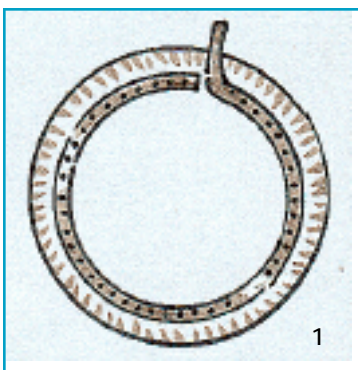
(see part 6 for original-sized stencils)

You need:

- 1 shaved wood box with round lid (7 cm ø, 3.5 cm high)
- STOCKMAR Decorating Wax (200 x 40 mm sheets) in yellow, purple and pink, leftover pieces of blue
- kitchen knife, nail, needle, paintbrush
- purple emulsion paint (e.g. "Plaka")
- lightweight cardboard for stencil
- hairspray or clear varnish

1- Paint box with waterproof purple paint; let paint dry.

2- Make a circle (ø 5.5 cm) from the yellow sheet wax using a stencil or cookie cutter and press onto the lid of the wooden box. Cut in a pattern of notches with the back of the knife (dia. 1).

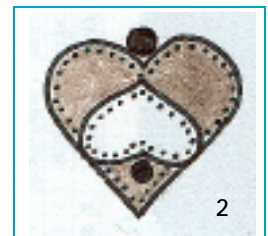


Shaved Wood Box with imprinted patterns

3- Cut a narrow (3 mm) ribbon from the yellow strip of sheet wax and press onto the yellow circle in such a way so that you create a raised, circular band; this can also be done in several segments. Cut in notches with the head of the nail (dia. 1).

4- Draw 2 hearts (3.5 und 2 cm wide) onto lightweight cardboard and cut out (also see part 6 for stencils). Press the stencils onto the purple and pink-coloured sheet wax and trace around and cut out with the knife or the needle.

5- Apply the hearts to the center of the lid and notch the edge of the hearts with the needle (dia. 2). Make tiny balls from the blue and yellow sheet wax and also apply. Fixate everything with hairspray or clear varnish.





Lacquered Box with sheet wax strips



Lacquered Box - Ribbon Pattern

You need:

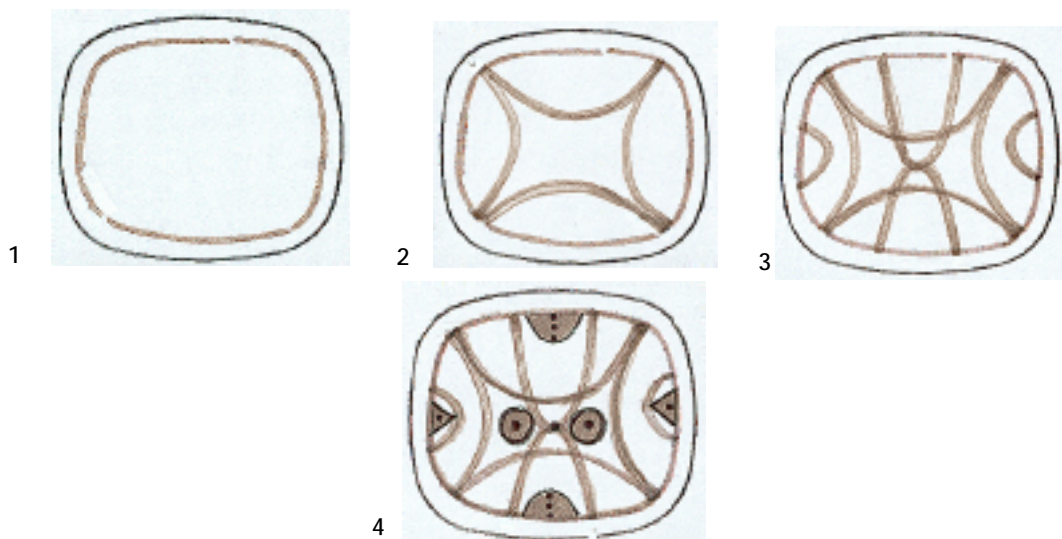
- 1 lacquered box (or rectangular box (7 x 3.5 cm))
- STOCKMAR Decorating Wax in orange (200 x 100 mm sheet), crimson and yellow (200 x 40 mm sheets)
- kitchen knife, ruler
- decorative beads (or make tiny balls of sheet wax instead)
- hairspray or clear varnish

1- Press the lid onto the orange wax sheet, trace around and cut out with the knife. Place on the lid, press on and smooth over the edges with your warm fingers.

2- Cut narrow ribbons (2 mm) from the red wax sheet. First apply to rim. This is easier if done in 2 to 3 segments. Form the curvatures while applying (dia. 1).

3- Apply the arches. You can achieve greater symmetry by fashioning the two opposite sides after each other (dia. 2 + 3).

4- Cut out two small semi-circles and two triangles from the yellow wax sheet; for the yellow circles, form little balls and press flat with finger. Apply all shapes according to the pattern (dia. 4). Decorate with tiny decorative beads (or make little balls from the sheet wax instead). Fixate box with hairspray or clear varnish.





Tips and Techniques Experimenting with Decorating Wax

Tea jar with Decorating and Modelling Wax

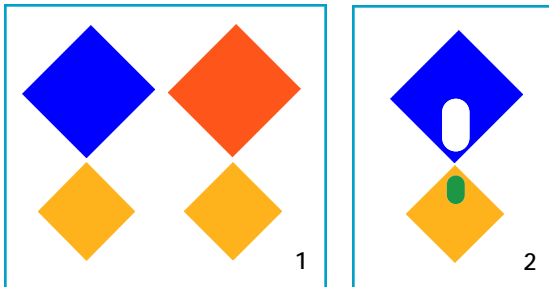
You need:

- Hexagonal metal tea jar (8.5 x 10 cm)
- STOCKMAR Decorating Wax in orange, golden and blue (200 x 100 mm sheets)
- STOCKMAR Modelling Wax in green and white (leftover pieces)
- kitchen knife/cutter, ruler
- hairspray or clear varnish



Tea jar - Decorating and Modelling Wax

1- In the case of the tea jar, only the printed surfaces are decorated with differently coloured sheet wax. The golden rim of the lid is retained, as well as the jar's narrow side strips. This colour is then picked up in the design.



Despite the excellent sticking qualities of STOCKMAR Decorating Wax, it can sometimes be useful to increase the adhesive strength (e.g. for large areas) You can achieve this best by spreading a bit of Sticking Wax onto a number of the surfaces with you finger. If necessary, glue can also be used. But this of course has the clear disadvantage that the wax sheet can no longer be removed from the surface.

2- Measure the side surfaces of the tea jar with the ruler and transfer the measurements to the respective wax sheet. Cut out the respective size twice from the orange and twice from the dark blue wax sheets and press firmly onto the side surfaces.

3- Cut out four yellow squares (2 x 2 cm), two dark blue squares (2,5 x 2,5 cm) and two orange squares (2,5 x 2,5 cm) and decorate the side surfaces with these (dia. 1).

4- For the lid, make a roll of STOCKMAR Modeling Wax, roll out evenly on a smooth surface and press a circle of this onto the lid.

5- From the white and green leftover Modelling Wax, make drops and apply to the lid and the sides of the jar (dia. 2). Lastly, fixate with hairspray or clear varnish.



STOCKMAR